

# APM603

Controller For Industrial Generators



**KOHLER.**  
IN POWER. SINCE 1920.

# APM603 GENERATOR CONTROLLER

The APM603 genset controller provides control, system monitoring and system diagnostics for a single generator set or system paralleling multiple generator sets. How? The APM603 interfaces your generator set to other power system equipment and network management systems using standard industry network communications.

Plus, it uses a patented hybrid voltage regulator and unique software logic to manage alternator thermal overload protection as well as serve as an overcurrent protective device—features normally requiring additional hardware. But that’s just the beginning. Take a look for yourself.

## FEATURES

### INTUITIVE INTERFACE

The intuitive and dynamic interface displays key data in English or metric units and provides easy local access to data. The larger, longer text string and color coding prevent misinterpretation of data as you toggle between screens.

### CUSTOM MODIFICATIONS

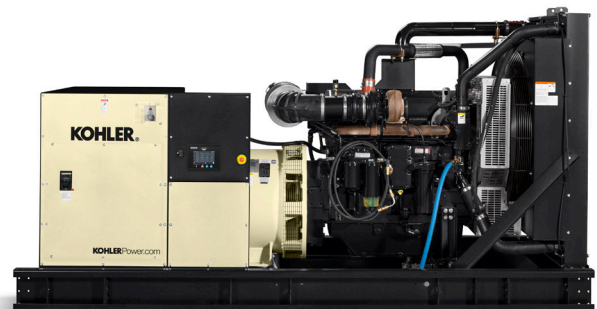
Create a customized favorites list or customize up to 16 gauges on the home screen to access site-specific critical data.

### SIMPLIFIED COMMUNICATION

The APM603 offers 2 RS-485 ports for Modbus™ RTU and a RJ45 Ethernet port for Modbus TCP, SNMP or BACnet™. These standard features don’t require an additional converter. Data can be uploaded and downloaded via USB port in front of the generator panel.

### CODE COMPLIANCE

The APM603 uses thermal and instantaneous current-limiting settings for alternator protection and provides protection against line-to-line and line-to-neutral faults. It also includes a maintenance mode for arc flash reduction per NEC 240.87. The APM603 controller meets NFPA 110, Level 1 and UL6200, the newest UL standards for generator controllers.



ALARM SILENCE / LAMP TEST

OFF / RESET

AUTO

RUN



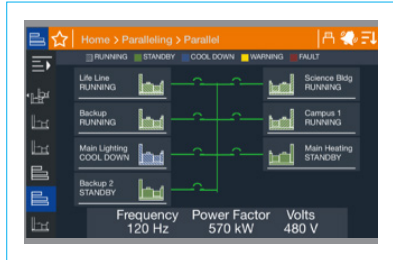
Feature	APM402	APM603	APM802	DEC8000	DEC3500
Voltage Regulation	0.50%	+0.25%	No	No	0.50%
PGEN Paralleling	No	Up to 8	No	Up to 32	Up to 8
Generator Management	No	Yes	No	Yes	Yes
Load Management	No	Yes	Yes	Yes	Yes
Remote S/V Bias	No	Yes	Yes	Yes	Yes
Display	2-Line	Color, Touch	Color, Touch	Color	5-Line
Alt Thermal Protection	Yes	Yes	Yes	No	No
Onboard Inputs	1A/3D	2A/6D	1A/18D	8D	9A/6D
Onboard Outputs	1 Relay	6 Relay	1A/18D	8D	4 Relay/7D
Extension I/O	21/50 41/150	41/150 81/40	81/40	81/80	41/150
Protective Relay	No	Yes	No	No	No
Event SnapShot	No	Yes	Yes	Yes	No
Data Logger	No	Yes	Yes	No	No
Real Time Clock	No	Yes	Yes	Yes	No

## FEATURES

### COST SAVINGS

#### Onboard Paralleling

The APM603 parallels up to eight generator sets of mixed sizes and fuel types and offers both load management and generator management, eliminating the need for a master control panel (MCP). The intuitive display offers a simple view of the system with easy indication for each generator including color-coded data, breaker status and bus details.



#### Generator Management

Built-in generator management extends maintenance intervals, conserves fuel and ensures system longevity. The ability to custom name each generator allows for a simple color-coded status view.

#### Load Management

APM603 can support up to 16 loads per system and can be used on a single generator or paralleling system which can be viewed from any controller in the system. This will allow you to shed lower-priority loads if needed to ensure critical loads are always powered.

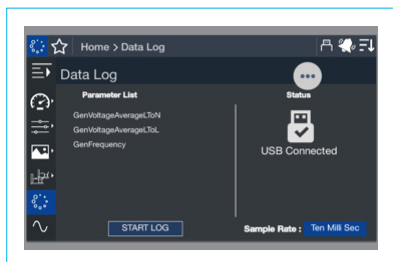
## TROUBLESHOOTING

#### Event SnapShot

Active warnings and faults will appear in the Event Log. These event snapshots capture 15 seconds of data before and after an event. These snapshots can be easily downloaded to an external USB drive for export and in-depth data analysis.

#### Data Logging

Automatically capture specific data that can be downloaded and analyzed for reports like JCAHO.



## ADDITIONAL OPTIONS

Want your controller with all the bells and whistles? Add the options below.

#### Common failure relay

Provides a relay output to signal a generator set fault.

#### Float/equalize battery charger

Available with 6- or 10-amp output for 12 or 24 V DC voltage output. The 10-amp model provides NFPA 110 charging and alarming capability.

#### Electrically operated circuit breakers

For paralleling systems. Available generator-mounted or remote-mounted.

#### Ground fault relay

Provides a relay output to signal a ground fault is detected.

#### Input/output module

Provides interfaces to the genset for customization. Inputs are external signals the controller receives, and outputs are information the generator provides to external systems.

#### Key switch

Allows selection of RUN, OFF and AUTO modes. Lockable in the AUTO position by removing the key.

#### Remote emergency stop

Switch available as a wall-mounted panel to remotely shut down the generator set.

#### KOHLER® remote serial annunciator (RSA)

Enables the operator to monitor the status of the generator set from a remote location, which may be required for NFPA 99 and NFPA 110 installations, and up to four automatic transfer switches.

#### Shunt trip wiring

Provides relay outputs to trip a shunt trip circuit breaker and to signal the common fault shutdowns. Contacts rated at 10 amps at 28 VDC or 120 VAC.

***EVERYTHING  
YOU NEED.***  
**CUSTOMIZED THE WAY  
YOU WANT IT.**

Introducing the all-new APM603 generator controller, an intelligent, touch screen database loaded with all the generator information (and controls) you need. Whether you want to customize your screen navigation, download data for deeper analysis or parallel with load and generator management, this controller offers it all.

If that weren't enough, our APM603 continuously monitors and manages operating conditions to protect your generator from damage and ensure ultimate reliability, flexibility and performance.

**KOHLER**<sup>®</sup>  
IN POWER. SINCE 1920.

North America 800.544.2444

**KOHLERPOWER.COM**

PRINTED IN U.S.A. G12-525 6/19 © 2019 BY KOHLER CO.